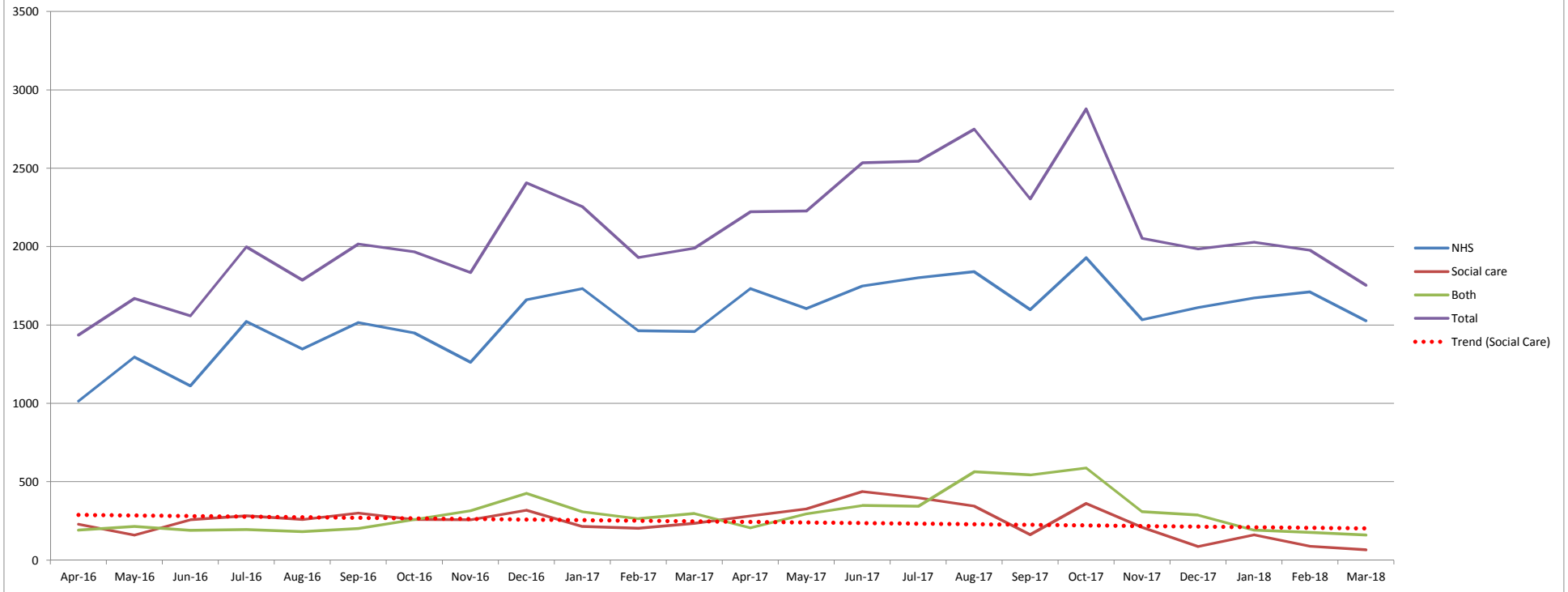
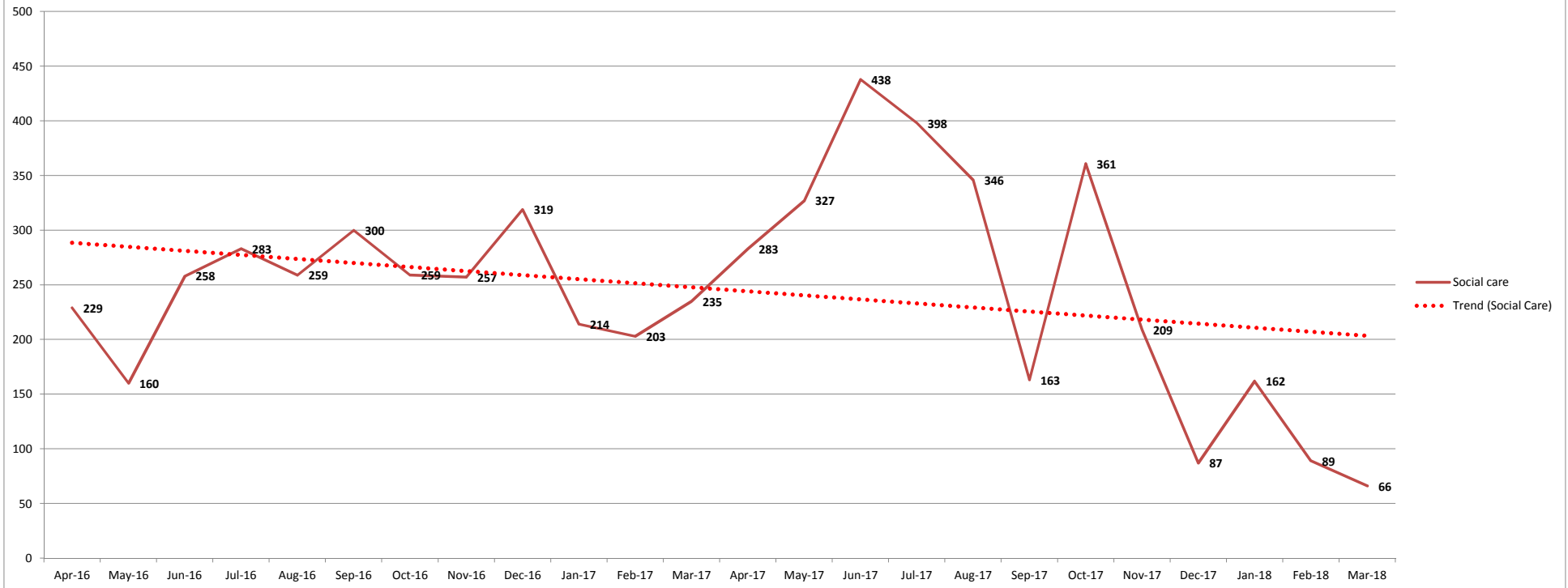


**Number of Days Delayed - April 2016 - March 2018**

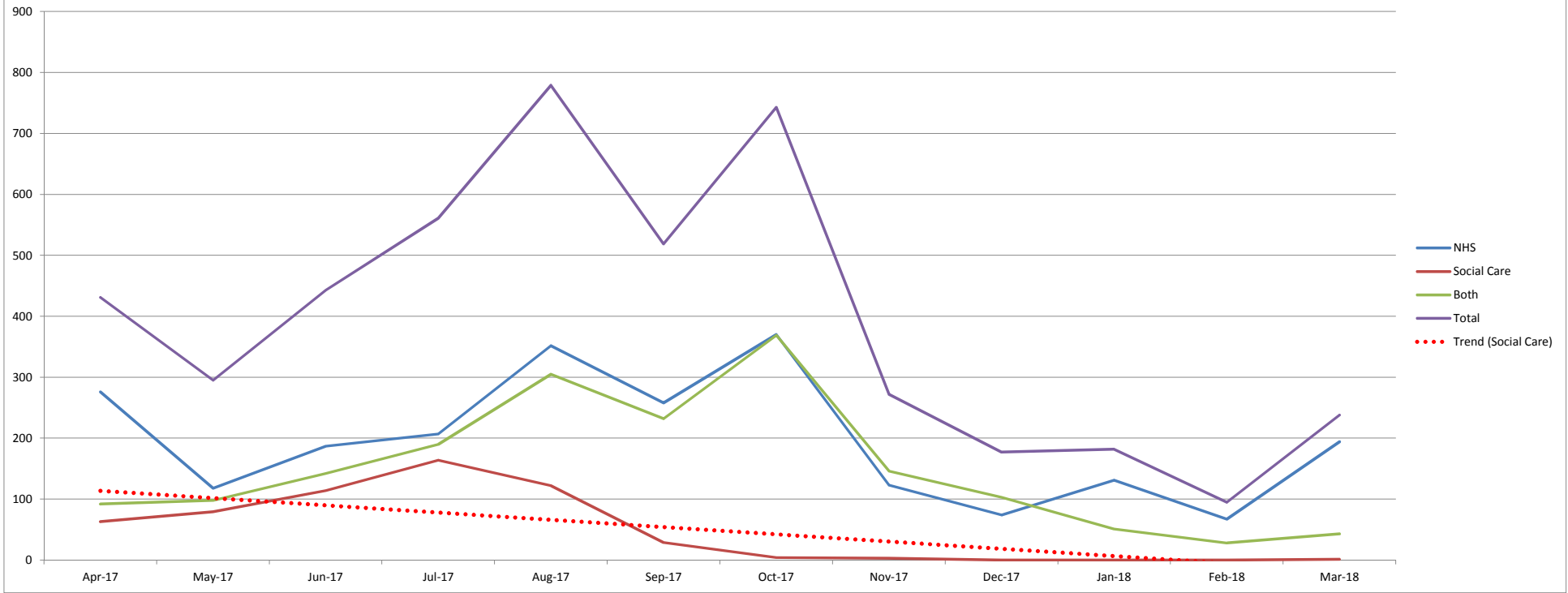


**Number of Days Delayed (Social Care) - April 2016 - March 2018**



Month	Days delayed			
	NHS	Social Care	Both	Total
Apr-16	1015	229	192	1436
May-16	1296	160	214	1670
Jun-16	1112	258	189	1559
Jul-16	1522	283	194	1999
Aug-16	1347	259	182	1788
Sep-16	1516	300	202	2018
Oct-16	1450	259	259	1968
Nov-16	1263	257	316	1836
Dec-16	1662	319	426	2407
Jan-17	1733	214	309	2256
Feb-17	1464	203	265	1932
Mar-17	1458	235	298	1991
Apr-17	1732	283	207	2222
May-17	1606	327	295	2228
Jun-17	1749	438	348	2535
Jul-17	1803	398	343	2544
Aug-17	1840	346	564	2750
Sep-17	1598	163	544	2305
Oct-17	1929	361	588	2878
Nov-17	1535	209	309	2053
Dec-17	1612	87	287	1986
Jan-18	1674	162	192	2028
Feb-18	1711	89	177	1977
Mar-18	1528	66	160	1754

**Number of Days Delayed (LPT) - April 2017 - March 2018**

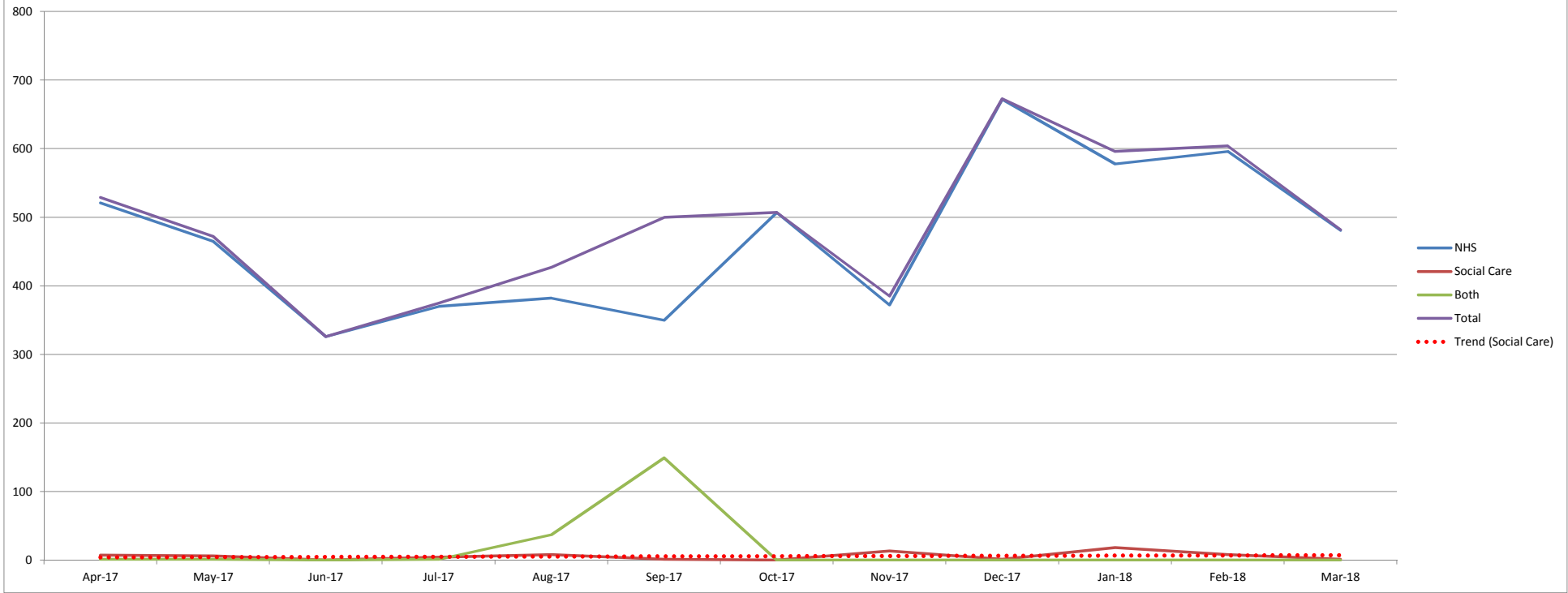


**Number of Days Delayed (LPT - Social Care) - April 2017 - March 2018**

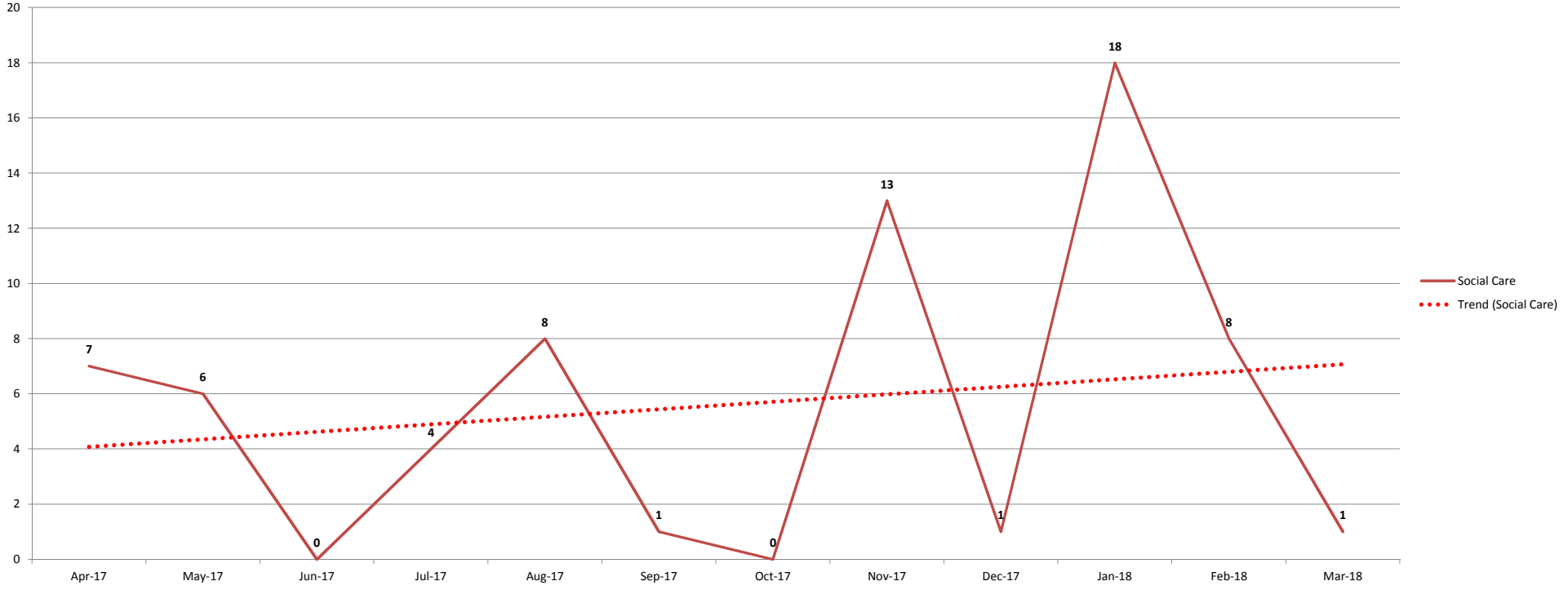


Month	Days Delayed (LPT)			Total
	NHS	Social Care	Both	
Apr-17	276	63	92	431
May-17	118	79	98	295
Jun-17	187	114	142	443
Jul-17	207	164	190	561
Aug-17	352	122	305	779
Sep-17	258	29	232	519
Oct-17	370	4	369	743
Nov-17	123	3	146	272
Dec-17	74	0	103	177
Jan-18	131	0	51	182
Feb-18	67	0	28	95
Mar-18	194	1	43	238

**Number of Days Delayed (UHL) - April 2017 - March 2018**



**Number of Days Delayed (UHL - Social Care) - April 2017 - March 2018**





Month	Days Delayed (UHL)			Total
	NHS	Social Care	Both	
Apr-17	521	7	1	529
May-17	465	6	1	472
Jun-17	326	0	0	326
Jul-17	370	4	1	375
Aug-17	382	8	37	427
Sep-17	350	1	149	500
Oct-17	507	0	0	507
Nov-17	372	13	0	385
Dec-17	672	1	0	673
Jan-18	578	18	0	596
Feb-18	596	8	0	604
Mar-18	481	1	0	482

This page is intentionally left blank